

---

# Barcode Label Generator

## User Guide

Version 1.0  
04-24-09



**Bio-Rad  
Laboratories**

© 2009 Bio-Rad Laboratories, Inc.

---

---

# Contents

<b>Introduction</b>	<b>1</b>
Key Features . . . . .	1
<b>Program Hints</b>	<b>2</b>
<b>Getting Help</b>	<b>3</b>
<b>Overview of the Barcode Label Generator</b>	<b>4</b>
Instrument . . . . .	4
Symbology . . . . .	4
Show Text with Barcode . . . . .	5
Text Before Lot . . . . .	6
Product . . . . .	7
Lot . . . . .	7
Print Lot . . . . .	7
Level . . . . .	8
Print Level . . . . .	8
Text After Lot . . . . .	9
Preview . . . . .	10
Output Type . . . . .	11
Print Full Sheet . . . . .	12
<b>Disable Pop-up Blockers</b>	<b>14</b>
For Microsoft® Internet Explorer® . . . . .	14
For other Pop-up Blockers (Norton, Yahoo, Google, etc.) . . . . .	14
<b>Creating Barcode Labels</b>	<b>15</b>
<b>Printing Barcode Labels</b>	<b>17</b>
<b>Saving Barcode Labels</b>	<b>19</b>
<b>Disclaimer</b>	<b>20</b>

---

---

## Introduction

The Barcode Label Generator prints custom barcode labels you can attach to vials to help identify the vial as containing QC material. This saves time by automating the process of entering your QC identifier (such as lot and level) into your instruments.

## Key Features

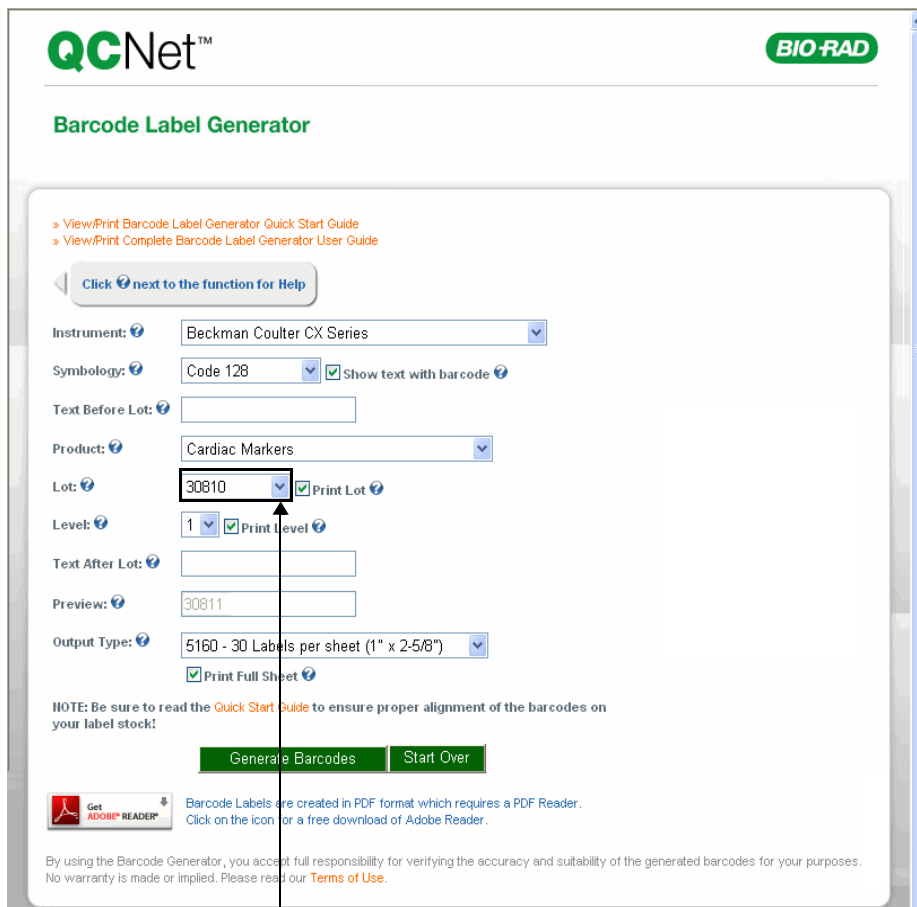
The key features of the Barcode Label Generator provide ease-of-use and flexibility.

- Prints barcode labels on standard label stock, such as Avery®.
- Uses the most common one-dimension (1D) barcode symbologies.
- Prints barcode labels from inkjet printers, laser printers, or barcode specialty printers to meet any laboratory's printing capabilities.
- Provides the option to specify the number of labels and label location on the sheet, saving paper and reducing costs.



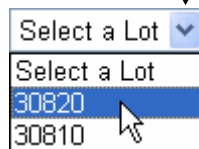
**Note:** The example barcode labels shown in this guide are for illustration purposes only and are not to scale.

# Program Hints



A list has a small arrow located on the right ...

... click the arrow to select an item from the list.



Select a check box to select an option.

A check box is selected when a check mark appears.



Clear a check box if you do not want to select the option.

A check box is cleared when the check mark is removed.



# Getting Help

The Barcode Label Generator provides context-sensitive help.

Click a Help symbol  to view information about a specific part of the software.

There are also links to view or print the Quick Start Guide and the User Guide (this guide).


Click to view or print the Quick Start Guide


Click to view or print the User Guide

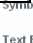

QCNet™ **BIO-RAD**

### Barcode Label Generator


> View/Print Barcode Label Generator Quick Start Guide  
> View/Print Complete Barcode Label Generator User Guide

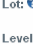
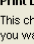
Click  next to the function for Help


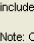
Instrument:  Beckman Coulter CX Series

Symbolology:  Code 128  Show text with barcode 


Text Before Lot:


Product:  Cardiac Markers

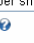
Lot:   Print Lot 

Level:   Print Level 

Text After Lot:


Preview:  90811

Output Type:  5160 - 30 Labels per sheet (1" x 2-5/8")

Print Full Sheet 

**NOTE:** Be sure to read the [Quick Start Guide](#) to ensure proper alignment of the barcodes on your label stock!

[Generate Barcodes](#) [Start Over](#)

 **Get Adobe Reader** Barcode Labels are created in PDF format, which requires a PDF Reader. Click on the icon for a free download of Adobe Reader.

By using the Barcode Generator, you accept full responsibility for verifying the accuracy and suitability of the generated barcodes for your purposes. No warranty is made or implied. Please read our [Terms of Use](#).

**Print Lot**

This checkbox should be checked if you want the Lot Number to be included in the barcode label.

Note: Observe the 'Preview' box to see the text that will be encoded in the barcode.

[Close](#)

# Overview of the Barcode Label Generator

1

2

## 1 Instrument

Select the instrument you are printing barcode labels for.



**Note:** Select **Other** if your instrument does not appear in the list. Refer to the Operator Manual for your instrument for a compatible symbology. See

2 Symbology below for more information.

## 2 Symbology

Symbology is equivalent to a language and refers to the type of barcode. The **Symbology** list contains symbology known to be read by the instrument selected in the **Instrument** list. Choose a symbology based on the recommendations of your instrument manufacturer.



**Note:** Code 128 is the most common and preferred symbology. Refer to the Operator Manual for your instrument for more information about compatible symbologies.

## Overview of the Barcode Label Generator (continued)

QCNet™ BIO-RAD

### Barcode Label Generator

> View/Print Barcode Label Generator Quick Start Guide  
> View/Print Complete Barcode Label Generator User Guide

Click next to the function for Help

Instrument: Beckman Coulter CX Series

Symbology: Code 128  Show text with barcode **3**

Text Before Lot:

Product: Cardiac Markers

Lot: 30810  Print Lot

Level: 1  Print Level

Text After Lot:

Preview: 30811

Output Type: 5160 - 30 Labels per sheet (1" x 2-5/8")  Print Full Sheet

NOTE: Be sure to read the [Quick Start Guide](#) to ensure proper alignment of the barcodes on your label stock!

[Generate Barcodes](#) [Start Over](#)

[Get ADOBE READER](#) Barcode Labels are created in PDF format which requires a PDF Reader. Click on the icon for a free download of Adobe Reader.

By using the Barcode Generator, you accept full responsibility for verifying the accuracy and suitability of the generated barcodes for your purposes. No warranty is made or implied. Please read our [Terms of Use](#).

### 3 Show Text with Barcode

Select the **Show text with barcode** check box if you want to print the text contained in the barcode on the label. Clear the **Show text with barcode** check box if you do not want to print the text contained in the barcode on the label.

Example:



## Overview of the Barcode Label Generator (continued)

QCNet™ BIO-RAD

### Barcode Label Generator

> View/Print Barcode Label Generator Quick Start Guide  
> View/Print Complete Barcode Label Generator User Guide

Click next to the function for Help

Instrument: Beckman Coulter CX Series

Symbology: Code 128  Show text with barcode

Text Before Lot:

Product: Cardiac Markers

Lot: 30810  Print Lot

Level: 1  Print Level

Text After Lot:

Preview: 30811

Output Type: 5160 - 30 Labels per sheet (1" x 2-5/8")  Print Full Sheet

NOTE: Be sure to read the [Quick Start Guide](#) to ensure proper alignment of the barcodes on your label stock!

[Generate Barcodes](#) [Start Over](#)

Barcode Labels are created in PDF format which requires a PDF Reader. Click on the icon for a free download of Adobe Reader.

By using the Barcode Generator, you accept full responsibility for verifying the accuracy and suitability of the generated barcodes for your purposes. No warranty is made or implied. Please read our [Terms of Use](#).

### 4 Text Before Lot

Type the text you want printed on the label before the lot number.



**Note:** This field is pre-populated for certain instruments (such as Siemens ADVIA Centaur® models) based on the instrument's requirements.

Example:



K30820



Text before lot



**Note:** The maximum recommended length of characters depends on the instrument and symbology selected. A message appears if the text you enter exceeds the maximum recommended length of characters.



## Overview of the Barcode Label Generator (continued)

QCNet™ BIO-RAD

### Barcode Label Generator

[View/Print Barcode Label Generator Quick Start Guide](#)  
[View/Print Complete Barcode Label Generator User Guide](#)

Click next to the function for Help

Instrument:

Symbology:   Show text with barcode

Text Before Lot:

Product:  5

Lot:   Print Lot 7

Level:   Print Level

Text After Lot:

Preview:

Output Type:   Print Full Sheet

NOTE: Be sure to read the [Quick Start Guide](#) to ensure proper alignment of the barcodes on your label stock!

[Get ADOBE READER](#) Barcode Labels are created in PDF format which requires a PDF Reader. Click on the icon for a free download of Adobe Reader.

By using the Barcode Generator, you accept full responsibility for verifying the accuracy and suitability of the generated barcodes for your purposes. No warranty is made or implied. Please read our [Terms of Use](#).

### 5 Product

Select the name for the quality control product.

### 6 Lot

Select the lot number for the quality control product.

### 7 Print Lot

Select the **Print Lot** check box if you want the lot information included in the barcode. Clear the **Print Lot** check box if you do not want the lot information included in the barcode.

## Overview of the Barcode Label Generator (continued)

QCNet™ BIO-RAD

### Barcode Label Generator

> View/Print Barcode Label Generator Quick Start Guide  
> View/Print Complete Barcode Label Generator User Guide

Click next to the function for Help

Instrument: Beckman Coulter CX Series

Symbology: Code 128  Show text with barcode

Text Before Lot:

Product: Cardiac Markers

Lot: 30810  Print Lot

Level: 1  Print Level

Text After Lot:

Preview: 30811

Output Type: 5160 - 30 Labels per sheet (1" x 2-5/8")  Print Full Sheet

NOTE: Be sure to read the Quick Start Guide to ensure proper alignment of the barcodes on your label stock!

[Generate Barcodes](#) [Start Over](#)

**Get ADOBE READER** Barcode Labels are created in PDF format which requires a PDF Reader. Click on the icon for a free download of Adobe Reader.

By using the Barcode Generator, you accept full responsibility for verifying the accuracy and suitability of the generated barcodes for your purposes. No warranty is made or implied. Please read our [Terms of Use](#).

### 8 Level

Select the level for the lot.

### 9 Print Level

Select the **Print Level** check box if you want the lot level information included in the barcode. Clear the **Print Level** check box if you do not want the lot level information included in the barcode.

## Overview of the Barcode Label Generator (continued)

QCNet™ BIO-RAD

### Barcode Label Generator

> View/Print Barcode Label Generator Quick Start Guide  
> View/Print Complete Barcode Label Generator User Guide

Click next to the function for Help

Instrument: Beckman Coulter CX Series

Symbology: Code 128  Show text with barcode

Text Before Lot:

Product: Cardiac Markers

Lot: 30810  Print Lot

Level: 1  Print Level

Text After Lot:

Preview: 30811

Output Type: 5160 - 30 Labels per sheet (1" x 2-5/8")  Print Full Sheet

NOTE: Be sure to read the [Quick Start Guide](#) to ensure proper alignment of the barcodes on your label stock!

[Generate Barcodes](#) [Start Over](#)

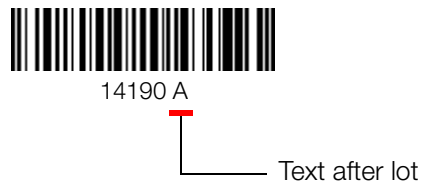
[Get ADOBE READER](#) Barcode Labels are created in PDF format which requires a PDF Reader. Click on the icon for a free download of Adobe Reader.

By using the Barcode Generator, you accept full responsibility for verifying the accuracy and suitability of the generated barcodes for your purposes. No warranty is made or implied. Please read our [Terms of Use](#).

### 10 Text After Lot

Type the text you want printed on the label after the lot number.

Example:



**Note:** The maximum recommended length of characters depends on the instrument and symbology selected. A message appears if the text you enter exceeds the maximum recommended length of characters.

## Overview of the Barcode Label Generator (continued)

QCNet™ BIO-RAD

### Barcode Label Generator

[View/Print Barcode Label Generator Quick Start Guide](#)  
[View/Print Complete Barcode Label Generator User Guide](#)

Click next to the function for Help

Instrument: Beckman Coulter CX Series

Symbology: Code 128  Show text with barcode

Text Before Lot:

Product: Cardiac Markers

Lot: 30810  Print Lot

Level: 1  Print Level

Text After Lot:

Preview: 30811

Output Type: 5160 - 30 Labels per sheet (1" x 2-5/8")  Print Full Sheet

NOTE: Be sure to read the [Quick Start Guide](#) to ensure proper alignment of the barcodes on your label stock!

[Generate Barcodes](#) [Start Over](#)

[Get ADOBE READER](#) Barcode Labels are created in PDF format which requires a PDF Reader. Click on the icon for a free download of Adobe Reader.

By using the Barcode Generator, you accept full responsibility for verifying the accuracy and suitability of the generated barcodes for your purposes. No warranty is made or implied. Please read our [Terms of Use](#).

### 11 Preview

This field shows how the text on the barcode label will look based on the selections you make. This field is read-only; you cannot type text in the **Preview** field.



**Tip:** The **Preview** field is helpful for reviewing the label before printing.

## Overview of the Barcode Label Generator (continued)

QCNet™ BIO-RAD

### Barcode Label Generator

> View/Print Barcode Label Generator Quick Start Guide  
> View/Print Complete Barcode Label Generator User Guide

Click next to the function for Help

Instrument: Beckman Coulter CX Series

Symbology: Code 128  Show text with barcode

Text Before Lot:

Product: Cardiac Markers

Lot: 30810  Print Lot

Level: 1  Print Level

Text After Lot:

Preview: 30811

Output Type: 5160 - 30 Labels per sheet (1" x 2-5/8")  Print Full Sheet

NOTE: Be sure to read the Quick Start Guide to ensure proper alignment of the barcodes on your label stock!

Generate Barcodes Start Over

Barcode Labels are created in PDF format which requires a PDF Reader. Click on the icon for a free download of Adobe Reader.

By using the Barcode Generator, you accept full responsibility for verifying the accuracy and suitability of the generated barcodes for your purposes. No warranty is made or implied. Please read our [Terms of Use](#).

### 12 Output Type

Select the layout of the label sheet you are printing. The list shows the Avery® product number, the layout per sheet, and the label dimensions.

Select **Custom - Single Label** to print a single label and type the height (inches) and width (inches) of the label in the appropriate fields.

Output Type: Custom - Single Label

" (h) x " (w)

Height "(h)" and width "(w)"  
for custom labels



**Note:** The **Custom - Single Label** selection is typically used for barcode label printers using continuous feed rolls of labels.

## Overview of the Barcode Label Generator (continued)

QCNet™ BIO-RAD

### Barcode Label Generator

> View/Print Barcode Label Generator Quick Start Guide  
> View/Print Complete Barcode Label Generator User Guide

Click next to the function for Help

Instrument:

Symbology:   Show text with barcode

Text Before Lot:

Product:

Lot:   Print Lot

Level:   Print Level

Text After Lot:

Preview:

Output Type:   Print Full Sheet

NOTE: Be sure to read the [Quick Start Guide](#) to ensure proper alignment of the barcodes on your label stock!

Barcode Labels are created in PDF format which requires a PDF Reader. Click on the icon for a free download of Adobe Reader.

By using the Barcode Generator, you accept full responsibility for verifying the accuracy and suitability of the generated barcodes for your purposes. No warranty is made or implied. Please read our [Terms of Use](#).

### 13 Print Full Sheet

Select the **Print Full Sheet** check box to print all labels on a sheet.

Clear the **Print Full Sheet** check box to print less than a full sheet of labels. The label matrix appears on the right side of the screen and shows the position of individual labels you can select and clear for printing.

Toggle Sheet	Toggle Column	Toggle Column	Toggle Column
Toggle Row	Print Label	Print Label	Print Label
Toggle Row	Print Label	Print Label	Print Label
Toggle Row	Print Label	Print Label	Print Label
Toggle Row	Print Label	Print Label	Print Label
Toggle Row	Print Label	Print Label	Print Label
Toggle Row	Print Label	Print Label	Print Label
Toggle Row	Print Label	Print Label	Print Label
Toggle Row	Print Label	Print Label	Print Label
Toggle Row	Print Label	Print Label	Print Label
Toggle Row	Print Label	Print Label	Print Label

The label matrix shows the layout of the labels you selected from the **Output Type** list.

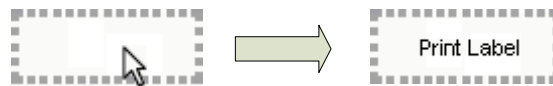


**Note:** Labels selected for printing appear with the text "Print Label" on the label matrix.

- Click the toggle buttons to switch between selecting and clearing a range of labels on the sheet, column, or row.

Click ...	To ...
<input type="button" value="Toggle Sheet"/>	Switch between selecting and clearing the sheet for printing.
<input type="button" value="Toggle Column"/>	Switch between selecting and clearing the column for printing.
<input type="button" value="Toggle Row"/>	Switch between selecting and clearing the row for printing.

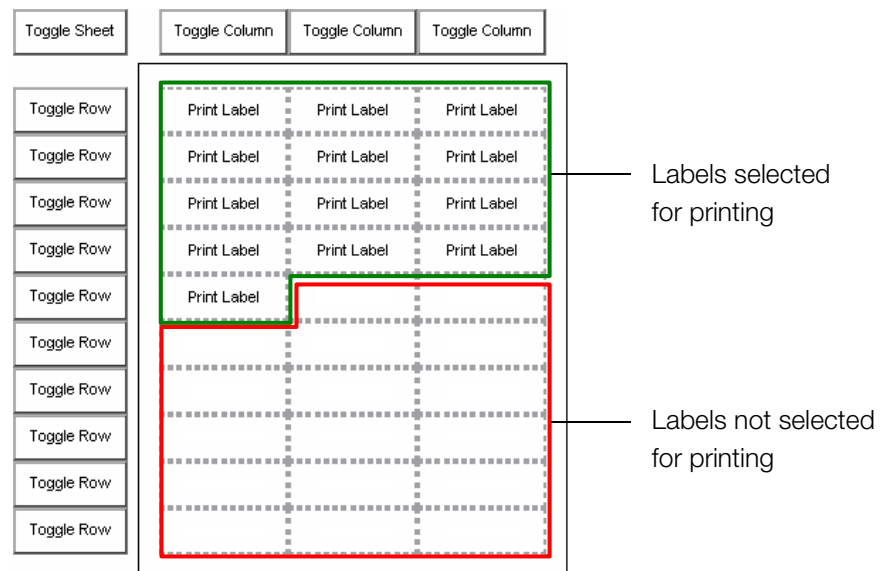
- Click a blank label to select it for printing. The label shows "Print Label" when selected.



- Click "Print Label" to deselect it for printing. The label is blank when deselected.



Example label matrix:




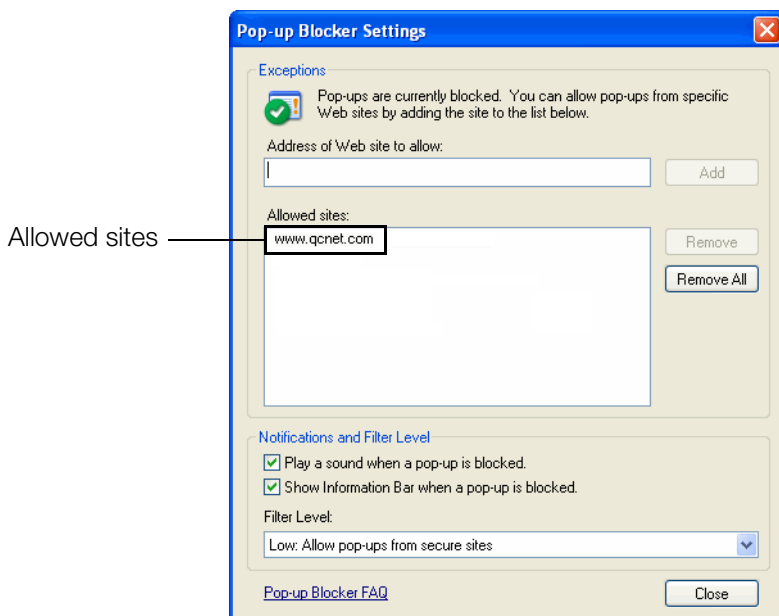
---

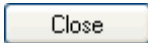
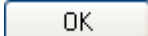
## Disable Pop-up Blockers

Disable any pop-up blockers in your internet browser before you begin using the Barcode Label Generator.

### For Microsoft® Internet Explorer®

- 1 Start Internet Explorer®.
- 2 Click **Tools** and then click **Internet Options**.
- 3 Click the **Privacy** tab.
- 4 Click  if the **Block pop-ups** option is selected.
- 5 Type www.qcnet.com in the **Address of Web site to allow** field and click **Add**.



- 6 Click  to close the **Pop-up Blocker Settings** dialog box.
- 7 Click  to close the **Internet Options** dialog box.

### For other Pop-up Blockers (Norton, Yahoo, Google, etc.)

Follow the manufacturer's instructions to add www.qcnet.com to the list of allowed sites.



---

## Creating Barcode Labels

- 1 Start an Internet browser window and navigate to [www.QCNet.com](http://www.QCNet.com).
- 2 Log on with your QCNet™ login ID and password.
- 3 Use one of the following methods to access the Barcode Label Generator:
  - Point to **Lab Tools™** and then click **Barcode Label Generator**.
  - Click **Barcode Labels** located in the **Quick Links** section.

The Barcode Label Generator opens in a new window.

- 4 Select the instrument from the **Instrument** list.



**Note:** This field is pre-populated for certain instruments (such as Siemens ADVIA Centaur® models) based on the instrument's requirements.

- 5 Select the symbology from the **Symbology** list.



**Note:** Code 128 is the most common and preferred symbology. Refer to the Operator Manual for your instrument for more information about compatible symbologies.

- 6 **Optional: Show text with barcode**

Select the **Show text with barcode** check box if you want to print the text contained in the barcode on the label.



**Tip:** The **Preview** field shows how the text on the barcode label will look based on the selections you make. This is helpful for reviewing the text before printing.

- 7 **Optional: Text Before Lot**

Type the text in the **Text Before Lot** field you want printed on the label before the lot number.

- 8 Select the product from the **Product** list.
- 9 Select the lot number from the **Lot** list.
- 10 **Optional:** Select the **Print Lot** check box if you want the lot information included in the barcode.

---

**11 Optional:** Select the control level from the **Level** list.

**12 Optional:** Select the **Print Level** check box if you want the lot level information included in the barcode.

**13 Optional: Text After Lot**

Type the text in the **Text After Lot** field you want printed on the label after the lot number.

**14** Select the type of labels you want to print from the **Output Type** list.

The list shows the Avery® product number, the layout per sheet, and the label dimensions.

Select **Custom - Single Label** to print a single label and type the height (inches) and width (inches) of the label in the appropriate fields.



**Note:** The **Custom - Single Label** selection is typically used for barcode label printers using continuous feed rolls of labels.

**15** Continue with the appropriate section according to what you want to do:

To ...	See ...
Print barcode labels	Page 17
Save barcode labels	Page 19

---

## Printing Barcode Labels

1 Are you printing a full sheet of labels?

**Yes:** Select the **Print Full Sheet** check box and go to step 3.



**No:** Make sure the **Print Full Sheet** check box is cleared and continue with step 2.



2 Select the labels for printing:

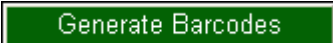


**Tip:** You can select any number of labels and label locations anywhere on the sheet of labels (used or unused). This saves labels and reduces costs.

- **To select a range of labels for printing:** Click the toggle buttons to switch between selecting and clearing a range of labels on the sheet, column, or row.
- **To select an individual label for printing:**
  - Click a blank label to select it for printing. The label shows “Print Label” when selected.
  - Click “Print Label” to deselect it for printing. The label is blank when deselected.



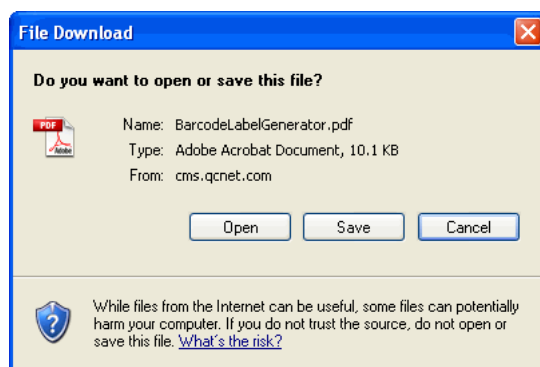
**Tip:** Labels selected for printing appear with the text “Print Label” on the matrix. Labels not selected for printing appear blank on the matrix.

3 Click  .

A message appears asking for confirmation.

4 Click  .

The **File Download** dialog box appears.



- 5 Click  .


The label page opens in a new window in Adobe® Acrobat® format.

- 6 Load the label stock into the printer.



**Note:** Refer to the printer manufacturer's instructions for information about properly loading the labels.

- 7 Use one of the following methods to print the labels:


- Click  on the Adobe® Acrobat® toolbar, or
- Click the **File** menu and then click **Print**.

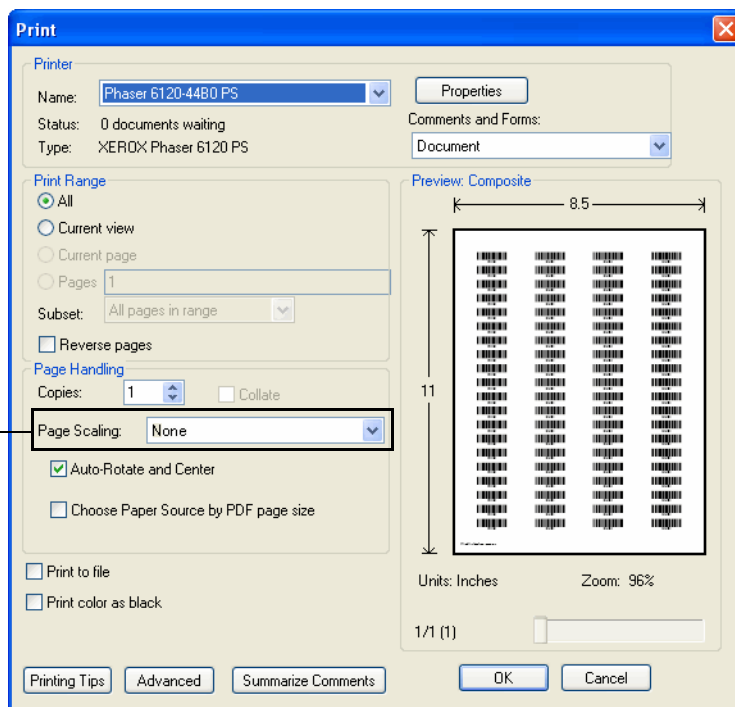
The **Print** dialog box appears.

- 8 Make sure **Page Scaling** is **None**.

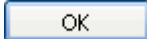


**Important:** **Page Scaling** must be set to **None** for labels to align properly.

  
Page Scaling  
must be  
**None**



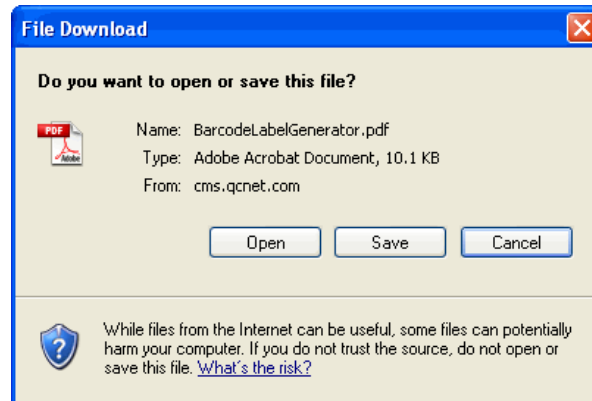
**Note:** Your software may look slightly different depending on the version of Adobe® Reader® installed.

- 9 Select the appropriate options for your printer and click  .

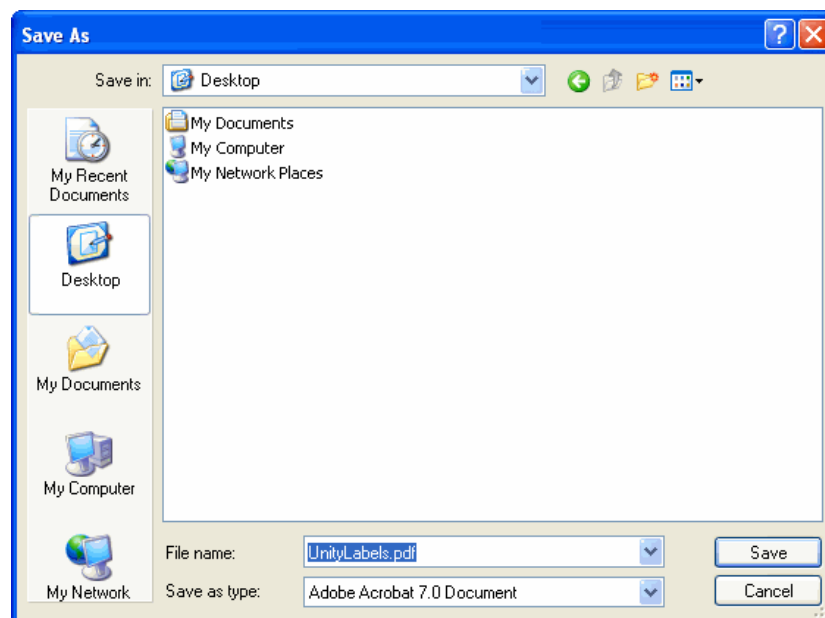
---

## Saving Barcode Labels

- 1 Click  to save the barcode labels for printing later.



The **Save As** dialog box appears.



- 2 Navigate to the location where you want to save the barcode labels.
- 3 Type a name for the labels in the **File** name field.
- 4 Click .

---

## Disclaimer

By using the Barcode Label Generator, you accept full responsibility for verifying the accuracy and suitability of the generated barcodes for your purposes. No warranty is made or implied. Click the **Terms of Use** link on the Barcode Label Generator website to read our Terms of Use.